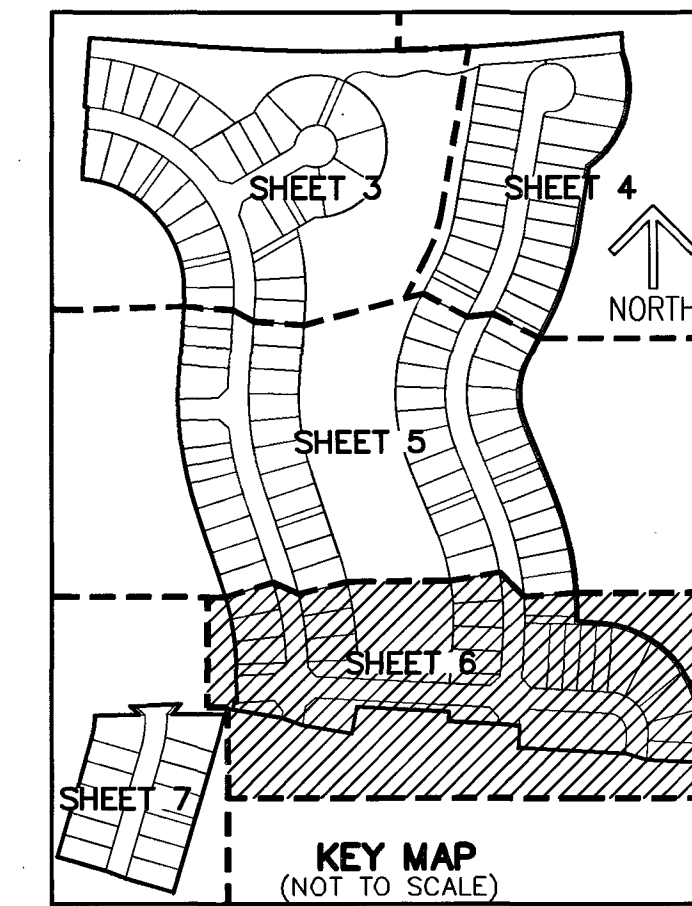


CRESSWIND PALM BEACH PHASE 4

BEING A REPLAT OF PORTION OF TRACT O.S.T. 21,
CRESSWIND PALM BEACH PHASE 2, AS RECORDED IN PLAT BOOK 130, PAGES 199 THROUGH 205,
OF THE PUBLIC RECORDS OF PALM BEACH COUNTY, FLORIDA,
TOGETHER WITH A PORTION OF SECTION 6, TOWNSHIP 43 SOUTH, RANGE 41 EAST,
CITY OF WESTLAKE, PALM BEACH COUNTY, FLORIDA.

THIS INSTRUMENT PREPARED BY
DAVID P. LINDLEY

OF
CAULFIELD & WHEELER, INC.
SURVEYORS - ENGINEERS - PLANNERS
7900 GLADES ROAD, SUITE 100
BOCA RATON, FLORIDA 33434 - (561)392-1991
CERTIFICATE OF AUTHORIZATION NO. LB3591

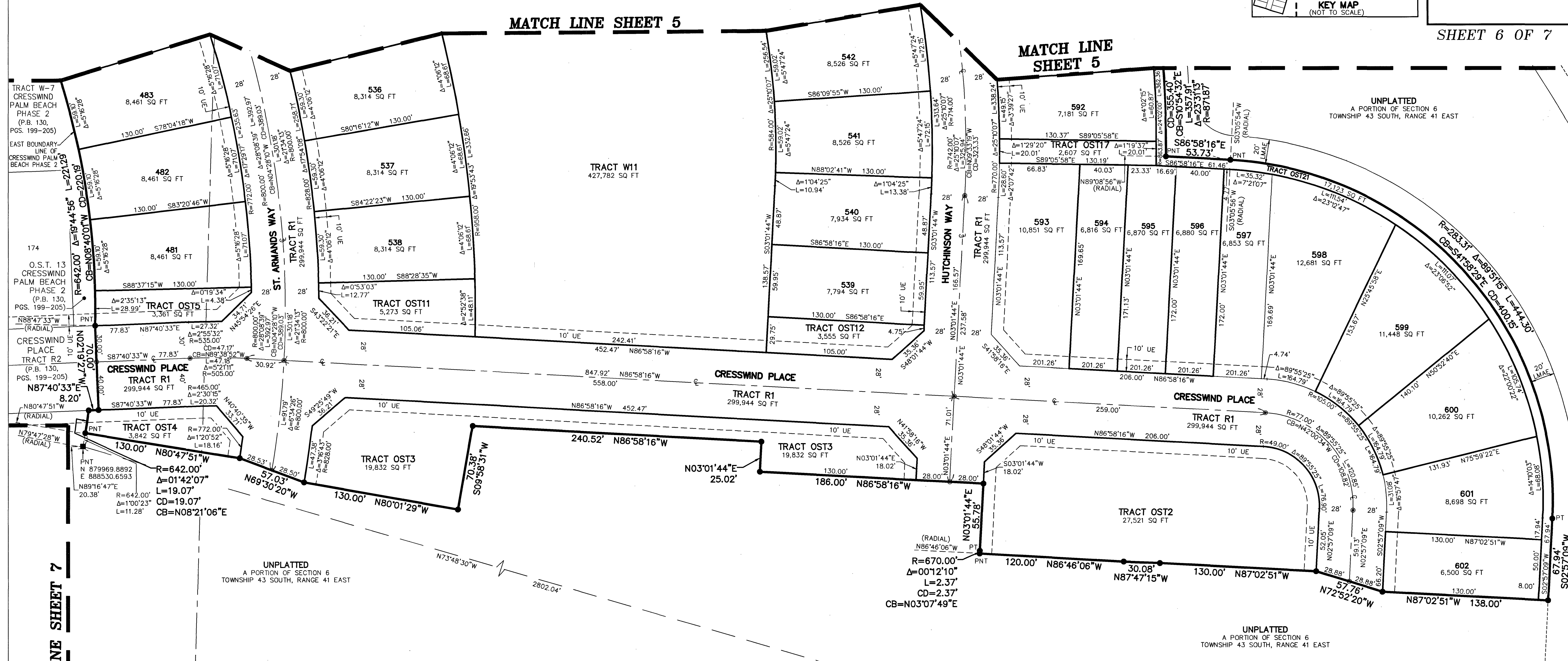


84

SHEET 6 OF 7

MATCH LINE SHEET 5

MATCH LINE SHEET 5

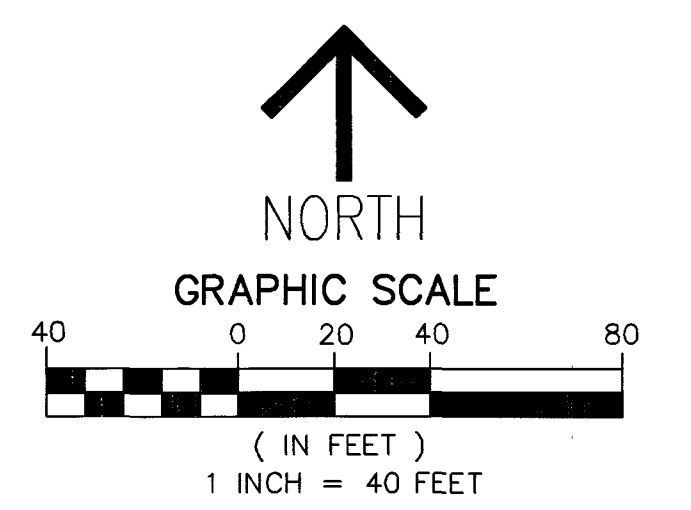


MATCH LINE SHEET 7

UNPLATTED
A PORTION OF SECTION 6
TOWNSHIP 43 SOUTH, RANGE 41 EAST

UNPLATTED
A PORTION OF SECTION 6
TOWNSHIP 43 SOUTH, RANGE 41 EAST

S.E. CORNER OF SECTION 6-43-41
FOUND PALM BEACH COUNTY
CONCRETE MONUMENT
N 879188.5341
E 891221.5519



- LEGEND/ABBREVIATIONS**
- CL - CENTERLINE
 - Δ - DELTA (CENTRAL ANGLE)
 - CB - CHORD BEARING
 - CD - CHORD DISTANCE
 - DE - DRAINAGE EASEMENT
 - E - EASTING (WHEN USED WITH COORDINATES)
 - L - ARC LENGTH
 - LMAE - LAKE MAINTENANCE ACCESS EASEMENT
 - LAE - LIMITED ACCESS EASEMENT
 - LB - LICENSED BUSINESS
 - N - NORTHING (WHEN USED WITH COORDINATES)
 - (R) - RADIAL LINE
 - O.S.T./OST - OPEN SPACE TRACT
 - PC - POINT OF CURVATURE
 - PT - POINT OF TANGENCY
 - PNT - POINT OF NON-TANGENCY
 - PRC - POINT OF REVERSE CURVATURE
 - R - RADIUS
 - RPE - RURAL PARKWAY EASEMENT
 - UE - UTILITY EASEMENT
 - PED - PEDESTRIAN ACCESS EASEMENT
 - - SET PERMANENT CONTROL POINT
 - - NAIL AND DISK STAMPED "C&W PRM LB3591"
 - - SET PERMANENT REFERENCE MONUMENT
 - - SET 5/8" IRON ROD WITH CAP
 - - STAMPED "C&W PRM LB3591"
 - - FOUND PERMANENT REFERENCE MONUMENT
 - - 4" x 4" x 24" CONCRETE MONUMENT WITH DISK STAMPED "PRM LB3591"

NOTES
COORDINATES, BEARINGS AND DISTANCES
COORDINATES SHOWN ARE GRID
DATUM = NAD 83 (2007 ADJUSTMENT)
ZONE = FLORIDA EAST
LINEAR UNIT = US SURVEY FEET
COORDINATE SYSTEM 1983 STATE PLANE
TRANSVERSE MERCATOR PROJECTION
ALL DISTANCES ARE GROUND
SCALE FACTOR = 1.0000017
GROUND DISTANCE X SCALE FACTOR = GRID DISTANCE
BEARINGS AS SHOWN HEREON ARE GRID DATUM,
NAD 83 (2007 ADJUSTMENT), FLORIDA EAST ZONE.